

1. Print off **Cloud Viewer** sheet and cut to size.
2. Paste sheet on one side of light card.
3. Print off **Wind Speed** sheet and cut to size.
4. Paste on back of light card.
5. Cut out the window area.



Cloud Viewer

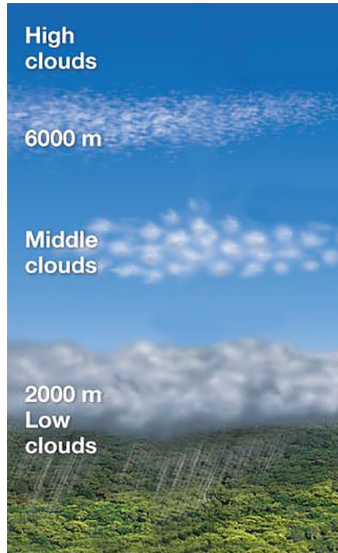
High level clouds usually indicate good weather and calm conditions.

High clouds

6000 m

Middle clouds

2000 m
Low clouds



Middle range clouds usually indicate changeable conditions with darker type clouds in this range indicating rainy conditions.

Low level clouds usually indicate drizzle, fog and low wind conditions.



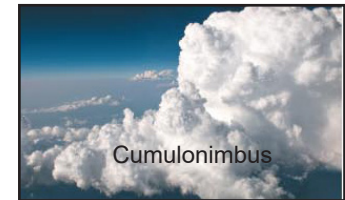
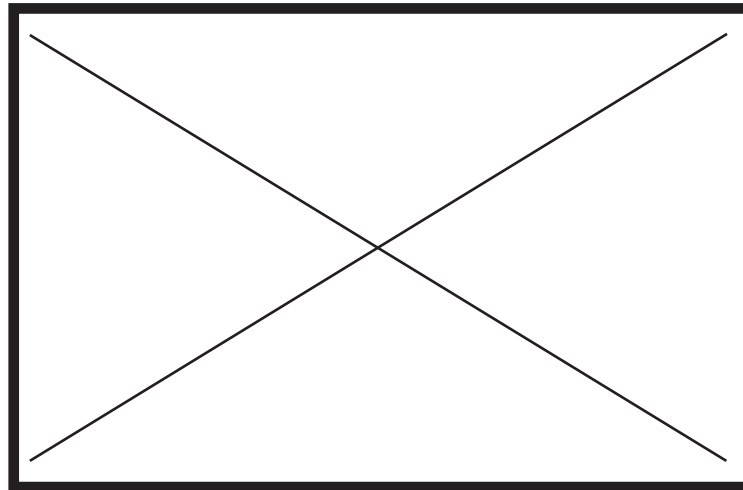
Alto-cumulus



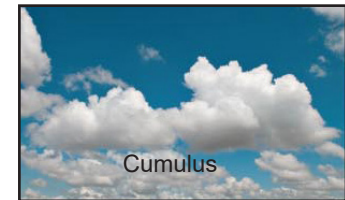
Alto-stratus



Cirrus



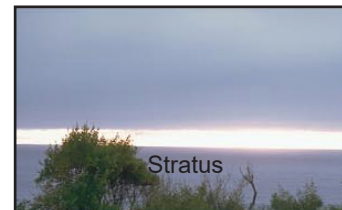
Cumulonimbus



Cumulus



Nimbostratus



Stratus



Stratus

1. Print off **Wind Speed** sheet and cut to size.
2. Paste sheet on one side of light card.
3. Print off **Cloud Viewer** sheet and cut to size.
4. Paste on back of light card.
5. Cut out the window area.



Wind Speed

Beaufort wind scale



Force 0 - calm mirror smooth
smoke rises vertically.



Force 1 - Light air - ripple on water -
smoke moves



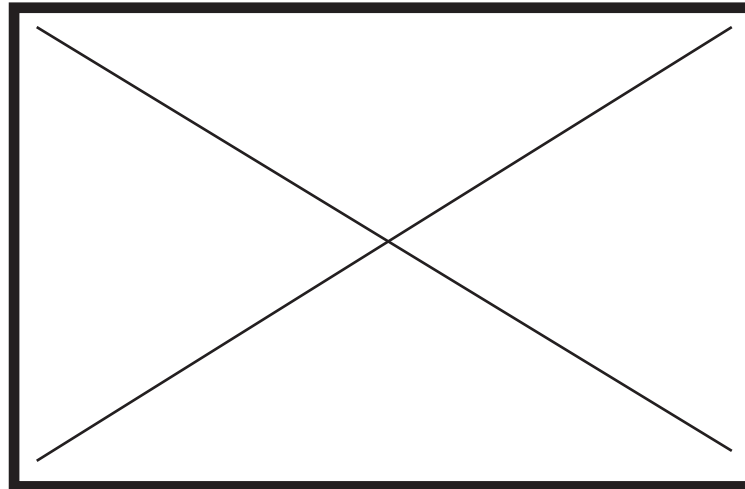
Force 2 - Light breeze - very small
waves - Leaves rustle



Force 3 - Gentle breeze- crests on
small waves - Leaves and twigs move,
flag extended.



Force 12 - Hurricane - Huge
waves, severe structural damage to
buildings, wide spread devastation.



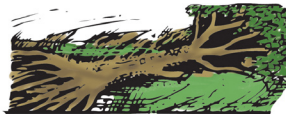
Force 4 - Moderate breeze - small
wave with some white horses - small
branches move



Force 11 - Violent storm
- Exceptionally high waves -
widespread damage to structures



Force 5 - Fresh breeze - Moderate
waves with many white horses - small
trees begin to sway



Force 9/10 - Storm - very high
waves, heavy rolling sea - trees



Force 8 - Gale branches break
off and very difficult to walk.



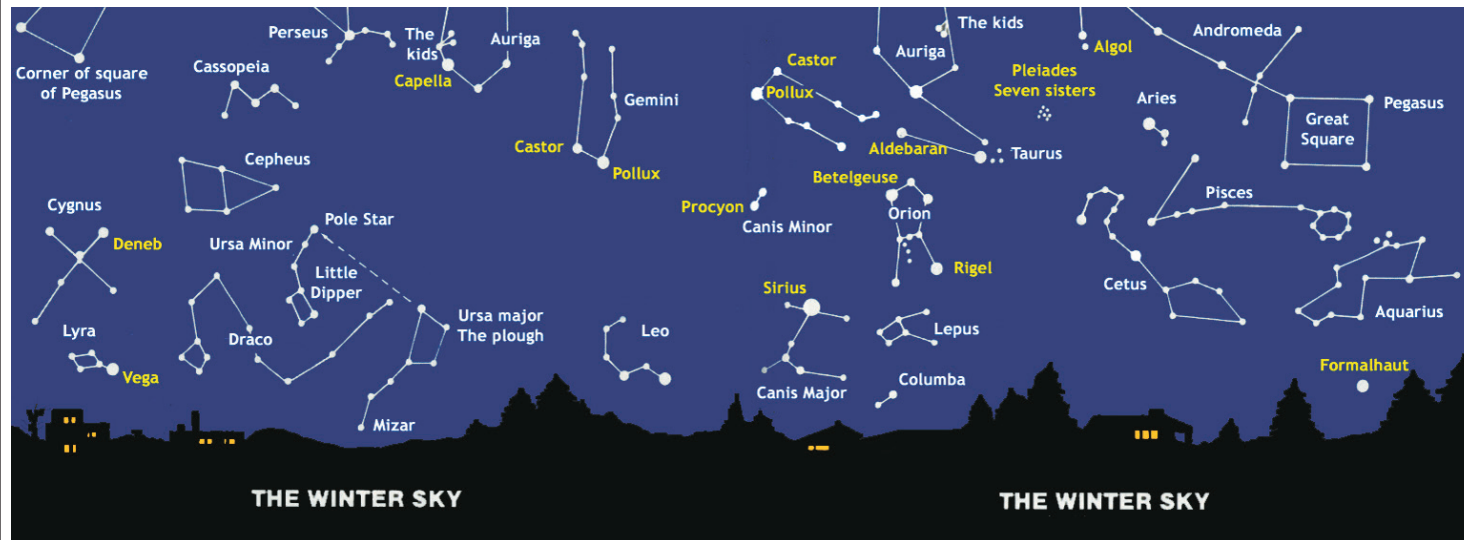
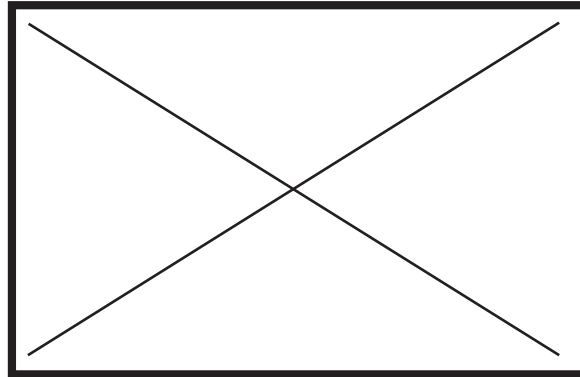
Force 7 - Near gale - Sea heaps
up with white foam - whole trees
move, difficult to walk.



Force 6 - Strong breeze - large
branches move, umbrellas difficult
to use

1. Print off **Star Viewer winter sky** sheet and cut to size.
2. Paste sheet on one side of light card.
3. Print off **Star Viewer Summer sky** sheet and cut to size.
4. Paste on back of light card.
5. Cut out the window area.

Star Viewer



1. Print off **Star Viewer winter sky** sheet and cut to size.
2. Paste sheet on one side of light card.
3. Print off **Star Viewer Summer sky** sheet and cut to size.
4. Paste on back of light card.
5. Cut out the window area.

Star Viewer

