	Gasóga na hÉireann / Scouting Ireland			
	No.	Issued	Amended	Next Review Date
	BOD-MA-001	November 2020	January 2025	January 2028
	Category: Membership			
	Membership Policy of Gasóga na hÉireann / Scouting Ireland			

Gasóga na hÉireann / Scouting Ireland Membership Policy

Contents

Definitions.....	2
Purpose.....	2
Gasóga na hÉireann / Scouting Ireland Types of Member	2
Categories of Members	3
Probation for Adult Members.....	4
Application for Membership	5
Continuing Membership.....	6
Stay Away from Active Scouting (without prejudice).....	8
Reasons and Methods to Ending Membership.....	9

Definitions

Throughout this document, the term “Member” refers to an individual person and not to a Scout Group which is a member of the company (Gasóga na hÉireann / Scouting Ireland Services clg) for constitutional and governance purposes. “Members” is the plural of “Member”.

" Being a volunteer is a privilege and a responsibility".

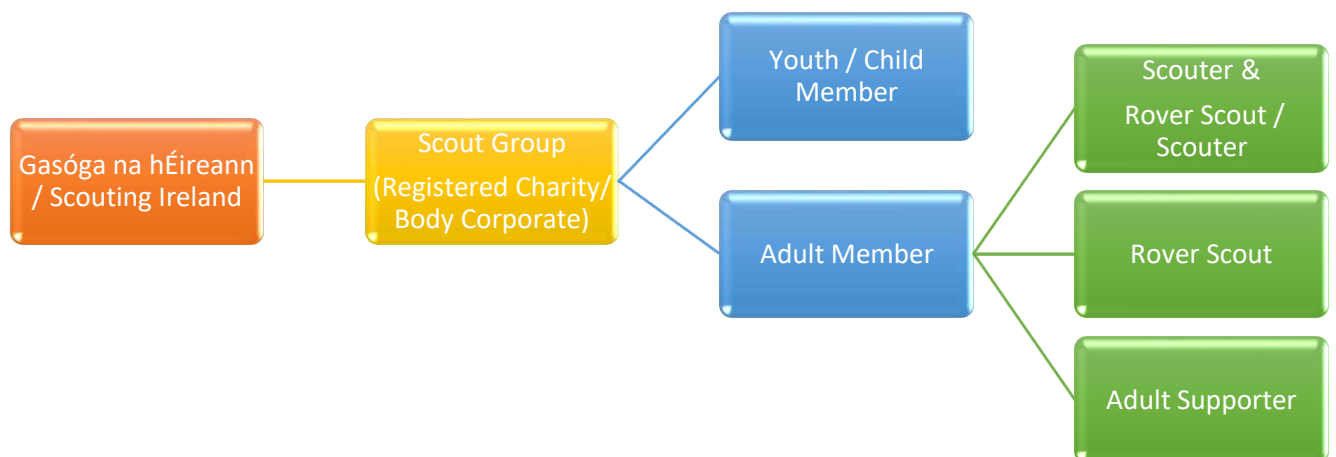
Purpose

The purpose of this policy is to define how a person becomes a member of a Gasóga na hÉireann / Scouting Ireland Scout Group and continues in membership of that Scout Group.

Gasóga na hÉireann / Scouting Ireland Types of “Member”

The Scout Group shall have the following types of members:

1. Youth / Child Member
2. Adult Member



All members of Gasóga na hÉireann / Scouting Ireland must be a member of a Scout Group. All adult members must be Garda Vetting / Access NI Check by the appropriate Statutory Authorities in accordance with the relevant legislative requirements and have completed the training requirements associated with that category of membership as defined by Gasóga na hÉireann / Scouting Ireland. There is no automatic right of membership of Scouting Ireland.

Youth members must undergo Garda Vetting / Access NI Check by the appropriate Statutory Authority once they reach the age of 16 years who support the delivery of youth programme.

All Rover Scouts over the age of 18 undergo Garda Vetting / Access NI Check by the appropriate Statutory Authority. A Rover Scouts primary role is to partake in the Youth Programme, but a constituent element of that program is to assist with youth member skills development. Consequently, all Rover Scouts over the age of 18 will undergo vetting.

A Rover Scout, who is also a Scouter, will be known as a Rover Scout + Scouter, thereby indicating a dual role.

It is the responsibility of the Group Leader to ensure that any adult who is a member of their Group is vetted and trained in accordance with the relevant legislative requirements and Gasóga na hÉireann / Scouting Ireland's policies and procedures and adheres to the policies and procedures of Gasóga na hÉireann / Scouting Ireland.

Categories of Members

Type	Category	Requirements for Membership
Youth / Child	Youth / Child Member	<ul style="list-style-type: none"> A Youth / Child Member is a registered uniformed member who takes part in the Youth / Child Programme of Gasóga na hÉireann / Scouting Ireland and is not older than 17 years and 364 days in age. All Youth / Child Members make the commitment to uphold the Scout Promise.
Adult	Rover Scout	<ul style="list-style-type: none"> A Rover Scout is a registered uniformed adult member who takes part in the Youth Programme of Gasóga na hÉireann / Scouting Ireland and is between the ages of 18 years of age and 25 years and 364 days of age. The Rover Scout (dependant on their role at group/county/provincial and national events) will also take responsibility for the care and supervision of Youth / Child Members in Gasóga na hÉireann / Scouting Ireland. All Rover Scouts undergo Garda Vetting / Access NI Check as per Gasóga na hÉireann / Scouting Ireland policy and procedures. All Rover Scouts make the commitment to uphold the Scout Promise.
Adult	Scouter & Rover Scout + Scouter	<ul style="list-style-type: none"> Scouter & Rover Scout + Scouter is a registered uniformed adult member who supports the delivery of the Youth / Child Programme of Gasóga na hÉireann / Scouting Ireland and takes responsibility for the care and supervision of Youth / Child Members in their Group and works with other adults as part of a team of Scouters in their section. Scouter & Rover Scout + Scouter undergo Garda Vetting / Access NI Check as per Gasóga na hÉireann / Scouting Ireland policy and procedures. Scouter & Rover Scout + Scouter make the commitment to uphold the Scout Promise. All adults (over the age of 18) accept and understand that their primary membership is as a Scouter and subsequently all appointments are made by the Group Leader.
Adult	Adult Supporter	<ul style="list-style-type: none"> An Adult Supporter is an adult who wishes to be involved with the work of the Scout Group, for example as a Treasurer, Secretary, Quartermaster / Bo'sun or Chairperson. An Adult Supporter holds an Appointment within the Scout Group and doesn't wear a Scout uniform. Support and advise Youth Members when they are bringing issues to the Group Council / Assembly. <p>They will provide advice and guidance to Young People (including by means of electronic interactive communications in keeping with safeguarding policies and procedures).</p>

Probation for Adult Members

All Adult Members must complete a probationary period of six calendar months of Scouting, after completing the Garda Vetting/Access NI Process any Scouting Ireland training requirements as outlined for that membership category.

The probation process as set down by Gasóga na hÉireann / Scouting Ireland will be managed by the Group Leader (or group delegate as appointed by Group Council) and include reviews using Scouting Ireland's Mutual Agreement & Review Policy at 2 months and 4 months.

Adult members are precluded from accessing Scouting Ireland Grievance and Dispute Policy SID-CCD01 within the first 6 months of probation.

Application for Membership

Type	Category	Requirements for Membership
Youth / Child	Youth / Child Member	<ul style="list-style-type: none"> • A Youth / Child Member is aged between 6 and 17 years plus 364 days old and presents themselves to their local Scout Group for membership. • The Scout Group grants application for membership in accordance with its own membership policy & constitution and the policies and procedures of Gasóga na hÉireann / Scouting Ireland and registers this membership with Gasóga na hÉireann / Scouting Ireland through the Membership Management System. • The parent(s) and/or guardian(s) of all Youth / Child Member must give their explicit and informed written consent by completing the relevant forms for membership for their child to take up membership of the Scout Group.
Adult	Rover Scout	<ul style="list-style-type: none"> • A Rover Scout is aged between 18 and 25 years plus 364 days old and applies for membership as a Rover Scout through their local Scout Group. • Rover Scout application for membership is granted by Gasóga na hÉireann / Scouting Ireland on successful completion of the registration, Garda Vetting / Access NI Check and training requirements associated with that category of membership as defined by Gasóga na hÉireann / Scouting Ireland. • Gasóga na hÉireann / Scouting Ireland approves and registers this membership with Gasóga na hÉireann / Scouting Ireland through the Membership Management System.
Adult	Scouter & Rover Scout + Scouter	<ul style="list-style-type: none"> • Scouter & Rover Scout + Scouter is aged over 18 years old and applies for membership as a Scouter or Rover Scout + Scouter through their local Scout Group. • Scouter & Rover Scout + Scouter application for membership is granted by Gasóga na hÉireann / Scouting Ireland on successful completion of the registration, Garda Vetting / Access NI Check and training requirements associated with that category of membership as defined by Gasóga na hÉireann / Scouting Ireland. • Scouter & Rover Scout + Scouter undertakes a commitment to complete the necessary and required training for their appointment in accordance with Gasóga na hÉireann / Scouting Ireland policies & procedures. • Gasóga na hÉireann / Scouting Ireland approves and registers this membership with Gasóga na hÉireann / Scouting Ireland through the Membership Management System.
Adult	Adult Supporter	<ul style="list-style-type: none"> • An Adult Supporter is aged over 18 years old and applies for membership as an Adult Supporter through their local Scout Group. • An Adult Supporter application for membership is granted by Gasóga na hÉireann / Scouting Ireland on successful completion of the registration, Garda Vetting / Access NI Check and training requirements associated with that category of membership as defined by Gasóga na hÉireann / Scouting Ireland. • Gasóga na hÉireann / Scouting Ireland approves and registers this membership with Gasóga na hÉireann / Scouting Ireland through the Membership Management System.

Requirements to Continuing Membership

Type	Category	Requirements to Continue Membership
Youth / Child	Youth / Child Member	<ul style="list-style-type: none"> The Youth / Child member is included in the annual Group Registration. The appropriate registration fee is paid to Gasóga na hÉireann / Scouting Ireland through the Scout Group in accordance with Gasóga na hÉireann / Scouting Ireland policies and procedures. The Youth / Child Member complies with the policies and procedures of Gasóga na hÉireann / Scouting Ireland. The Youth / Child member promotes the ideals of the Youth Charter.
Adult	Rover Scout	<ul style="list-style-type: none"> The Rover Scout is included in the annual Group Registration. The appropriate registration fee is paid to Gasóga na hÉireann / Scouting Ireland through the Scout Group in accordance with Gasóga na hÉireann / Scouting Ireland policies and procedures. The Rover Scout complies with the policies and procedures of Gasóga na hÉireann / Scouting Ireland. The Rover Scout provides educational, training, cultural, recreational, leisure, social or physical activities to children. The Rover Scout promotes the ideals of the Youth / Child Charter. The Rover Scout undertakes ongoing appropriate safeguarding training in accordance with Gasóga na hÉireann / Scouting Ireland policies and procedures. The Rover Scout ensures that they are compliant with Garda Vetting/Access NI Checks as per legislation or Scouting Ireland Policy while being an active member of Scouting Ireland. Where there is a noncompliance of this requirement, they then must cease All Scouting activities until they are notified by Scouting Ireland, that they are again compliant with Garda Vetting/ Access NI Check as per legislation or Scouting Ireland Policy. The Rover Scout ensures that they are up to date with their requirements for Safeguarding Training for Membership of Scouting Ireland, failure to do so will require the Rover Scout to cease all Scouting activities until the required Safeguarding Training has been completed. The Rover Scout undertakes a commitment to further advancing their Training within Gasóga na hÉireann / Scouting Ireland in accordance with Gasóga na hÉireann / Scouting Ireland policies and procedures.
Adult	Scouter & Rover Scout + Scouter	<ul style="list-style-type: none"> Scouter & Rover Scout + Scouter is included in the annual Group Registration. The appropriate registration fee is paid to Gasóga na hÉireann / Scouting Ireland through the Scout Group in accordance with Gasóga na hÉireann / Scouting Ireland policies and procedures. Scouter & Rover Scout + Scouter continues to uphold their Scout Promise. Scouter & Rover Scout + Scouter is undergoing or has completed their probationary period. Scouter & Rover Scout + Scouter complies with the policies and procedures of Gasóga na hÉireann / Scouting Ireland. Scouter & Rover Scout + Scouter undertakes re-vetting in accordance with Gasóga na hÉireann / Scouting Ireland policies & procedures and legislative requirements. The Scouter & Rover Scout + Scouter ensures that they are compliant with Garda Vetting/Access NI Checks as per legislation or

		<p>Scouting Ireland Policy while being an active member of Scouting Ireland. Where there is a noncompliance of this requirement, they then must cease all Scouting activities until they are notified by Scouting Ireland, that they are again compliant with Garda Vetting/ Access NI Check as per legislation or Scouting Ireland Policy.</p> <ul style="list-style-type: none"> • Scouter & Rover Scout + Scouter undertakes ongoing appropriate safeguarding training in line with Gasóga na hÉireann / Scouting Ireland policies and procedures. The Scouter & Rover Scout + Scouter ensures that they are up to date with their requirements for Safeguarding Training for Membership of Scouting Ireland, failure to do so will require the Scouter & Rover Scout + Scouter to cease All Scouting activities until the required Safeguarding Training has been completed. • Scouter & Rover Scout + Scouter has completed/is in the process of completing the necessary training for their appointment in accordance with Gasóga na hÉireann / Scouting Ireland policies & procedures. • Scouter & Rover Scout + Scouter undertakes a commitment to further advancing their training within Gasóga na hÉireann / Scouting Ireland in accordance with Gasóga na hÉireann / Scouting Ireland policies and procedures.
Adult	Adult Supporter	<ul style="list-style-type: none"> • The Adult Supporter is included in the annual Group Registration. • The appropriate registration fee is paid to Gasóga na hÉireann / Scouting Ireland through the Scout Group in accordance with Gasóga na hÉireann / Scouting Ireland policies and procedures. • The Adult Supporter complies with the policies and procedures of Gasóga na hÉireann / Scouting Ireland. • The Adult Supporter undertakes re-vetting in accordance with Gasóga na hÉireann / Scouting Ireland policies & procedures and legislative requirements. The Adult Supporter ensures that they are compliant with Garda Vetting/Access NI Checks as per legislation or Scouting Ireland Policy while being an active member of Scouting Ireland. Where there is a noncompliance of this requirement, they then must cease All Scouting activities until they are notified by Scouting Ireland, that they are again compliant with Garda Vetting/ Access NI Check as per legislation or Scouting Ireland Policy. • The Adult Supporter undertakes ongoing appropriate safeguarding training in accordance with Gasóga na hÉireann / Scouting Ireland policies and procedures. The Adult Supporter ensures that they are up to date with their requirements for Safeguarding Training for Membership of Scouting Ireland, failure to do so requires the Rover Scout to cease immediately all Scouting activities until the required Safeguarding Training has been completed. • The Adult Supporter undertakes a commitment to further advancing their training within Gasóga na hÉireann / Scouting Ireland in accordance with Gasóga na hÉireann / Scouting Ireland policies and procedures.

Stay Away from Active Scouting (without prejudice)

This is a temporary measure at the request of an authority within Scouting Ireland to facilitate an investigation, or remedy to enable a member to return to Scouting in an appropriate manner. This can be requested by the relevant authority at Group/County/Provincial or National for failure to comply with Scouting Ireland Policies.

Where the request is made by the Safeguarding Department the Safeguarding 'Stay Away Policy' shall be followed. For all other instances the following shall apply the initial Stay Away from Scouting request can be for 14 days with a review meeting, and if required a further 14-day step aside period.

Type	Category	Stay Away from Active Scouting (without prejudice)
Youth / Child	Youth / Child Member (Under 18 Years)	<ul style="list-style-type: none"> At the request of Safeguarding Department for a reason related to Safeguarding. At the request of Group Council or Group Leader At request of the Board of Scouting Ireland for reason of Dispute or Discipline. At Request of the Volunteer & Group Support Department for reason of Dispute or Discipline.
Adult	Rover Scout	<ul style="list-style-type: none"> At the request of Safeguarding Department for a reason related to Safeguarding. At the request of Group Council or Group Leader At request of the Board of Scouting Ireland for reason of Dispute or Discipline. At Request of the Volunteer & Group Support Department for reason of Dispute or Discipline.
Adult	Scouter & Rover Scout + Scouter	<ul style="list-style-type: none"> At the request of Safeguarding Department for a reason related to Safeguarding. At the request of Group Council or Group Leader At request of the Board of Scouting Ireland for reason of Dispute or Discipline. At Request of the Volunteer & Group Support Department for reason of Dispute or Discipline.
Adult	Adult Supporter	<ul style="list-style-type: none"> At the request of Safeguarding Department for a reason related to Safeguarding. At the request of Group Council or Group Leader At request of the Board of Scouting Ireland for reason of Dispute or Discipline. At Request of the Volunteer & Group Support Department for reason of Dispute or Discipline.

Reasons and Methods to Ending Membership

Type	Category	Methods to End Membership
Youth / Child	Youth / Child Member	<ul style="list-style-type: none"> • Failure to meet the Requirements of Continuing Membership of the Membership Policy. • Resignation – notified to the Group Leader. • Termination of membership – Decision made in accordance with local group policy • Turns 18 years of age and fails to apply for membership as a Rover Scout/ Rover Scout + Scouter / Scouter. • Safeguarding Policy of Gasóga na hÉireann / Scouting Ireland not adhered to. following an allegation of abuse/concern, where a determination is reached through Safeguarding's Assessment of Suitability, and upheld by the Board of Scouting Ireland, for a membership to be removed. • Following a decision of the Board of Scouting Ireland
Adult	Rover Scout	<ul style="list-style-type: none"> • Failure to meet the Requirements to Continue Membership of the Membership Policy. • Resignation – notified to the Group Leader. • Termination of membership – Decision made in accordance with local Scout Group policy –Turns 26 years of age and fails to apply for membership as a Scouter. • Termination of membership – Decision made in accordance with the Grievance & Disputes policy SID-CCD01 & Disciplinary Policy SID-CC-04. • Termination of membership is ratified and directed by the Board in accordance with the Grievance & Disputes policy SID-CCD01 & Disciplinary Policy SID-CCD04. • Safeguarding Policy of Gasóga na hÉireann / Scouting Ireland not adhered to. following an allegation of abuse/concern, where a determination is reached through Safeguarding's Assessment of Suitability, and upheld by the Board of Scouting Ireland, for a membership to be removed. • Following a decision by the Board of Scouting Ireland
Adult	Scouter & Rover Scout + Scouter	<ul style="list-style-type: none"> • Failure to meet the Requirements to Continue Membership of the Membership Policy. • Resignation – notified to the Group Leader. • Termination of membership – Decision made in accordance with the Grievance & Disputes policy SID-CCD01 & Disciplinary Policy SID-CCD04. • Termination of membership is ratified and directed by the Board in accordance with the Grievance & Disputes policy SID-CCD01 & Disciplinary Policy SID-CCD04. • Safeguarding Policy of Gasóga na hÉireann / Scouting Ireland not adhered to. following an allegation of abuse/concern, where a determination is reached through Safeguarding's Assessment of

		<p>Suitability, and upheld by the Board of Scouting Ireland, for a membership to be removed.</p> <ul style="list-style-type: none"> • Following a decision by the Board of Scouting Ireland.
Adult	Adult Supporter	<ul style="list-style-type: none"> • Failure to meet the Requirements to Continue Membership of the Membership Policy. • Resignation – notified to the Group Leader. • Termination of membership – Decision made in accordance with the Termination of membership is ratified and directed by the Board in accordance with the Grievance & Disputes policy SID-CCD01 & Disciplinary Policy SID-CCD04. • Termination of membership is ratified and directed by the Board in accordance with the Termination of membership is ratified and directed by the Board in accordance with the Grievance & Disputes policy SID-CCD01 & Disciplinary Policy SID-CCD04. • Safeguarding Policy of Gasóga na hÉireann / Scouting Ireland not adhered to. following an allegation of abuse/concern, where a determination is reached through Safeguarding's Assessment of Suitability, and upheld by the Board of Scouting Ireland, for a membership to be removed. • Following a decision by the Board of Scouting Ireland.